



CHILDREN'S TRAIL

MONET & THE IMPRESSIONISTS

Have fun exploring the exhibition
and make some art of your own

ART
GALLERY
NSW

Collect
a pencil



Go on a journey
through the
exhibition



Discover the art
of Monet and the
Impressionists

★ **Look, draw and have fun!**



MONET & THE IMPRESSIONISTS

Encounter a world of colour, light and texture. Discover Monet and his fellow Impressionists, their influences and the people and places they painted *en plein air*.

above: Claude Monet *Boulevard Saint-Denis, Argenteuil, in winter 1875* (detail)

oil on canvas, 60.9 x 81.6 cm. Museum of Fine Arts, Boston, gift of Richard Saltonstall © MFA Boston

cover: Claude Monet *Port-Goulphar, Belle-Ile 1887* (detail)

oil on canvas, 81 x 65 cm. Art Gallery of New South Wales, purchased 1949

★ **Step up** to this street scene in Honfleur, France.

Monet painted this town early in his artistic career. **Observe** the colours he has used and the shadows. What time of day do you think it is?

Draw yourself going shopping in this scene and add shop names on the buildings and more people.

Compare this painting with Monet's other works as you move through the exhibition. What do you notice about his use of colour and brush marks as he gets older and more experienced?



At home have a French breakfast or picnic with some of your friends or family. Find out what food French people eat and learn the words in French. Bon appétit!

Claude Monet *Rue de la Bavole, Honfleur* c1864 oil on canvas, 55.9 x 61 cm
Museum of Fine Arts, Boston, bequest of John T. Spaulding © MFA Boston



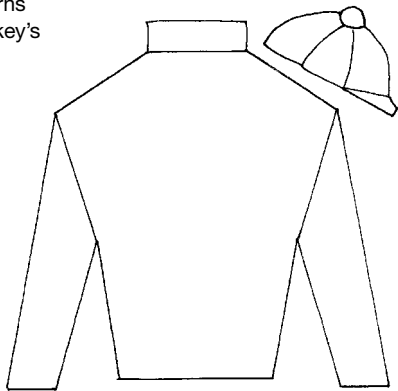
★ **Here** are horses and jockeys getting ready for a race.

Can you see the crowd in the background waiting for the race to start? What noises would you hear if you stepped into this scene? Which horse would you like to ride? **Invent** a name for your horse.



Look at the colours the jockeys are wearing. Why do you think they wear such bright clothes known as 'silks'? Which one is your favourite? Why?

Design your own patterns and colours for this jockey's silks and cap.



At home find out what Australian horse race 'stops the nation'. What do the spectators wear? Imagine you are going to the races and design your own special outfit.



★ **Here** is a mother and child.

Monet liked to paint using small dabs of paint. **Look** at this painting close-up and further away. How does it change?

Where are the mother and child? What time of year do you think it is? What is the child playing with? **Describe** your favourite toy to someone who is with you and explain why you like it so much.

Imagine what the mother and child's house might look like. Is it big and grand or small like a cottage? **Extend** the picture and draw their house behind them and more of the garden.



Claude Monet Camille Monet and a child in the artist's garden in Argenteuil 1875, oil on canvas, 55.3 x 64.7 cm
Museum of Fine Arts, Boston, anonymous gift in memory of Mr and Mrs Edwin S Webster © MFA Boston

At home sketch your own family in your garden or somewhere that you love to visit and spend time together.



★ **Listen** to the noise of the ocean on this windy beach.

Observe how Monet paints the waves crashing on the shore and the dramatic clouds in the sky. What type of marks has he used to create a stormy effect?

Describe how the textures of the waves change as they get nearer to the beach.

Imagine what it would feel like to be the two people on this beach.

Role-play what they might be saying to each other.

Have you ever been on a beach on a stormy or windy day?

Write a poem about your experience, or this picture, starting each line with the letters of 'windy'.

W _____

I _____

N _____

D _____

Y _____



Claude Monet *Rough weather at Etretat* 1883 oil on canvas, 65 x 81 cm. National Gallery of Victoria, Felton Bequest 1913

At home use ripped tissue, coloured paper and glue to make a collage of waves crashing on a beach.



★ **Find** this peaceful country scene.

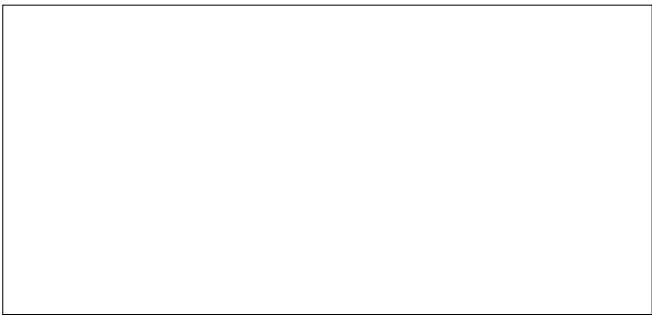
This field was near Monet's home at Giverny in France. Monet and the Impressionists liked to paint outdoors (*en plein air*) at different times of the day so they could observe the effect of light on the surface of objects.



Monet mixed and used only the colours of the rainbow (prism); the colours of light. **Recite** the seven colours of the rainbow. **List** all of the colours you can see in this painting. Has Monet used all seven of the rainbow colours?

Compare this scene with other fields and landscapes in this room. Which one is your favourite? Why?

Invent and sketch your own landscape below.



At home experiment with mixing paint in the colours of the rainbow. Paint a picture using the new colours you create.

Claude Monet *Meadow with haystacks near Giverny* 1885 oil on canvas, 74 x 93.5 cm
Museum of Fine Arts, Boston, bequest of Dr Arthur Tracy © MFA Boston



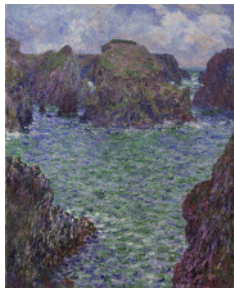
★ **Fly** over this dramatic coastline.

Locate which Japanese print may have inspired Monet to paint these cliffs and the sea.

Monet loved to paint water; the ripples, the light and the colours. **Observe** how he has painted the sea in Port-Goulphar. Would you like to go swimming here?

Imagine how difficult it would be.

Step into this painting and **tell** a tale about your adventure. **Write** it below.



Claude Monet *Port-Goulphar, Belle-Ile* 1887 oil on canvas, 81 x 65 cm
Art Gallery of New South Wales, purchased 1949

At home find out what special equipment artists like Monet would need to take with them to paint outdoors (*en plein air*). Gather your own artist's kit and paint outdoors.



MONET & THE IMPRESSIONISTS

Art Gallery of New South Wales, Sydney
11 October 2008 – 26 January 2009

Museum of New Zealand Te Papa Tongarewa
14 February – 17 May 2009

Written by Victoria Collings; designed by Karen Hancock
© Public Programs Department Art Gallery of New South Wales 2008

Principal sponsor
Ernst & Young

★ **Locate** these two wintry pictures.

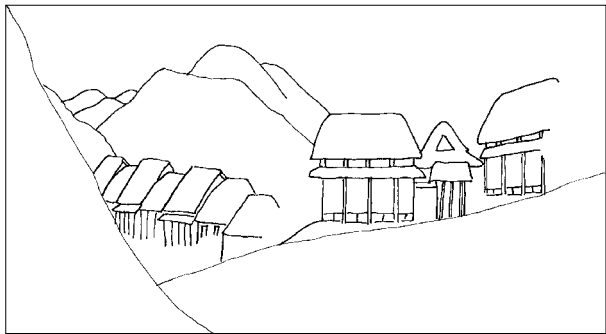
Monet collected Japanese prints throughout his life and enjoyed looking at their shapes and lines and how the artists looked at the same scene at different times of the day and year. He had a large collection in his house at Giverny.



Compare this Japanese print and Monet's painting. **List** the ways Monet's painting shows how he was influenced by Japanese art.

Imagine what Kanbara would look like at a different time of year.

Add leaves or blossoms and people to this print below to create a hot, sunny summer scene or a cool autumn day.



top: Utagawa Hiroshige | Publisher: Takenouchi Magohachi Kanbara: night snow second state, from the series *Fifty-three stations of the Tokaido road*, also known as the *First Tokaido* or *Great Tokaido* Japan, Edo period, c1833-34, woodblock print; ink and colour on paper, approx 24.5 x 35 cm. Museum of Fine Arts, Boston, William Sturgis Bigelow Collection © MFA Boston; bottom: Claude Monet *Boulevard Saint-Denis, Argenteuil*, in winter 1875 oil on canvas, 60.9 x 81.6 cm. Museum of Fine Arts, Boston, gift of Richard Saltonstall © MFA Boston

At home find out more about Monet's Japanese-inspired garden at Giverny and the paintings he made there. Make your own Japanese Zen garden in a sand tray.



★ **Travel** to this tranquil bridge in Japan.

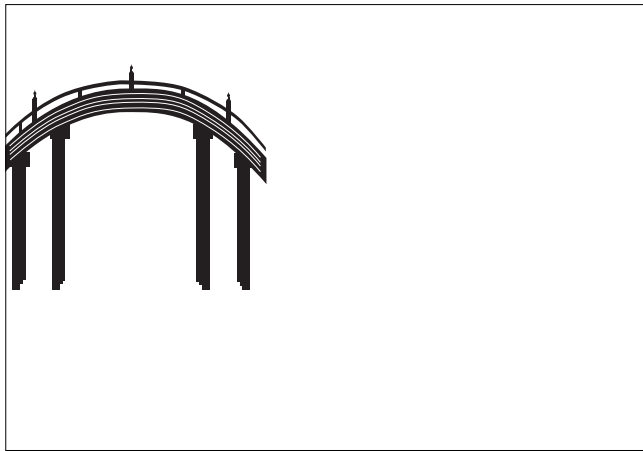
Find these things and tick them as you find them:

- ☐ Birds
- ☐ Red lanterns
- ☐ Calligraphy (beautiful writing)
- ☐ Seated groups of people
- ☐ Rocks
- ☐ Ladies wearing kimonos

Draw this bridge in a new setting.
Is it in a city, or in the countryside?
Is it the present day or long ago?



Utagawa Hiroshige I Publisher: Uoya Eikichi Inside Kameido Tenjin shrine from the series One hundred famous views of Edo Japan, Edo period, 1856 woodblock print; ink and colour on paper, 35.6 x 24.2 cm
Museum of Fine Arts, Boston, Gift of Dr G S Amsden © MFA Boston



At home discover the art of Japanese prints by looking in books or at the Gallery's collection online. Design your own scene and draw it in black outline and colour it.

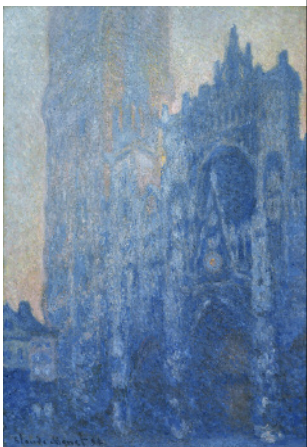


★ **Observe** the grand façade of Rouen Cathedral.

Monet liked to paint series of works; the same subject many times. **Discover** the examples in the exhibition that show how he did this. What do you notice?

Examine how Monet has painted the light on the surface of the cathedral's stone walls. What colours can you detect?

Extend the picture up and to the left and draw the top of the tower and some more buildings and clouds.



Claude Monet *Rouen Cathedral façade and Tour d'Albane (morning effect)* 1894 oil on canvas, 106.1 x 73.9 cm
Museum of Fine Arts, Boston, Tompkins Collection – Arthur Golden Tompkins Fund © MFA Boston

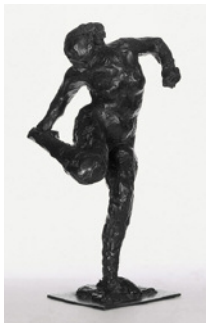
At home find out where Rouen is and what the cathedral looks like. Has Monet captured a good likeness? Paint the view from your bedroom window at different times to create your own series.



★ **Dance** over to find these ballerinas.



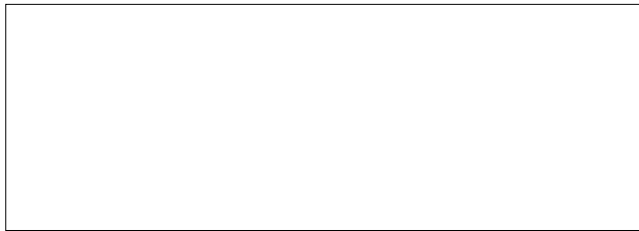
Degas was an Impressionist artist who loved to draw and sculpt dancers. **Study** the surface of the sculpture. **Walk** around it and view it from different angles. Can you spot any of the artist's fingerprints?



Role-play how the dancer is standing. Could you stand like this for a long time while an artist sketches you?

Time how long you can stand still.

Sketch people walking around the exhibition.
Is it easy to get enough detail when they move?



left: Edgar Degas *Dancers in the rehearsal room* 1900–05 charcoal with pastel on paper, mounted on cardboard, 54.4 x 85.1 cm. Museum of Fine Arts, Boston, gift of Arthur Wiesenberger © MFA Boston; right: Edgar Degas *Dancer looking at the sole of her right foot* 1900–10, cast 1919–21, bronze, Cire perdue (lost wax), 48 cm. Art Gallery of New South Wales, bequest of Paul Haefliger 1982

At home discover more about the works of art made by the Impressionists in this exhibition. Which one is your favourite?

